

DS-KABD8003-RS2

Protective Shield

HIKVISION



Key Feature

- Adapts to two-module surface mounting with protective shield.

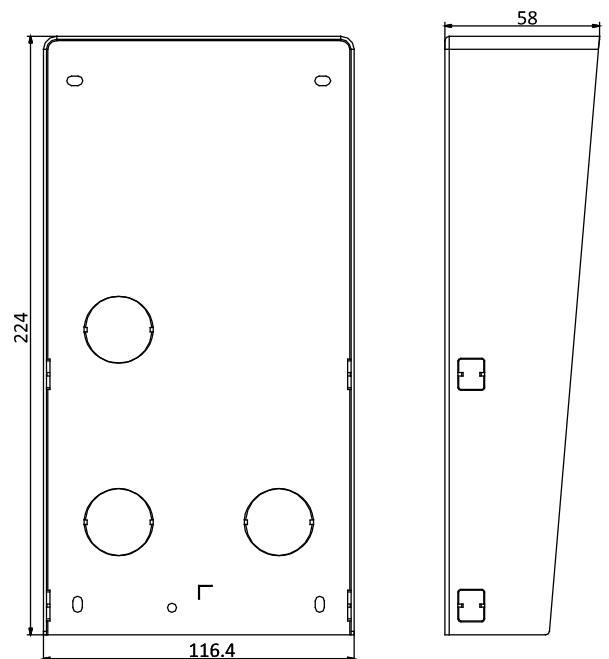
Specification

Parameters	
Material	SECC
Working temperature	-40° C to +60° C (-40° F to 140° F)
Working humidity	10% to 95%
Dimension	224 × 116.4 × 58 mm (8.82" × 4.58" × 2.28")
Weight	500 g

Available Model

DS-KABD8003-RS2

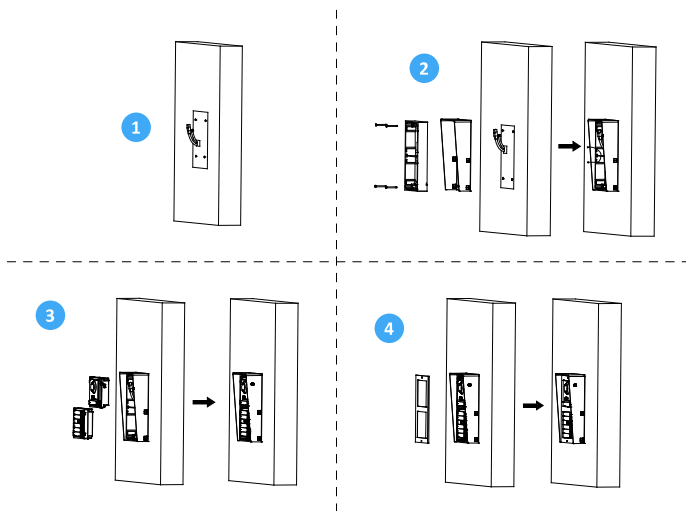
Dimension



Unit : mm

Installation

1. Paste the installation Sticker 1 onto the wall. Make sure the sticker is placed leveled via measuring with the gradienter.
Chisel 4 holes with drill align to the screw holes on the sticker.
The suggested size of hole is 6 (diameter) × 25 (depth) mm.
2. Remove the sticker and insert the expansion sleeves into the screw holes. Fix the mounting frame and protective shield onto the wall with 4 expansion bolts.
Thread the module-connecting line across the thread hole of the frame.
Pass the main unit connecting lines across the thread hole to the upper grid.
Connect the cables and module-connecting line to the corresponding interfaces of the main unit, then place the main unit into the upper grid.
Connect the other end of the module-connecting line to the input interface of the sub module.
Organize the line with cable tie in the package.
3. Insert the modules in to the frame after wiring. Main unit must be placed in the top grid.
4. Use the hexagon wrench in the package fix the cover onto the frame.





CENTRAL SECURITY DISTRIBUTION

An Anixter Company

1300 319 499

csd.com.au