

Security
WHOLESALE



How to Add Wireless Detector to AX PRO Wireless Control Panel

Title:	How to Add Wireless Detector to AX PRO Wireless Control Panel	Version:	v1.0	Date:	09/07/2020
Product:	DS-PWA Series AX PRO Wireless Security Control Panel			Page:	1 of 2

Preparation

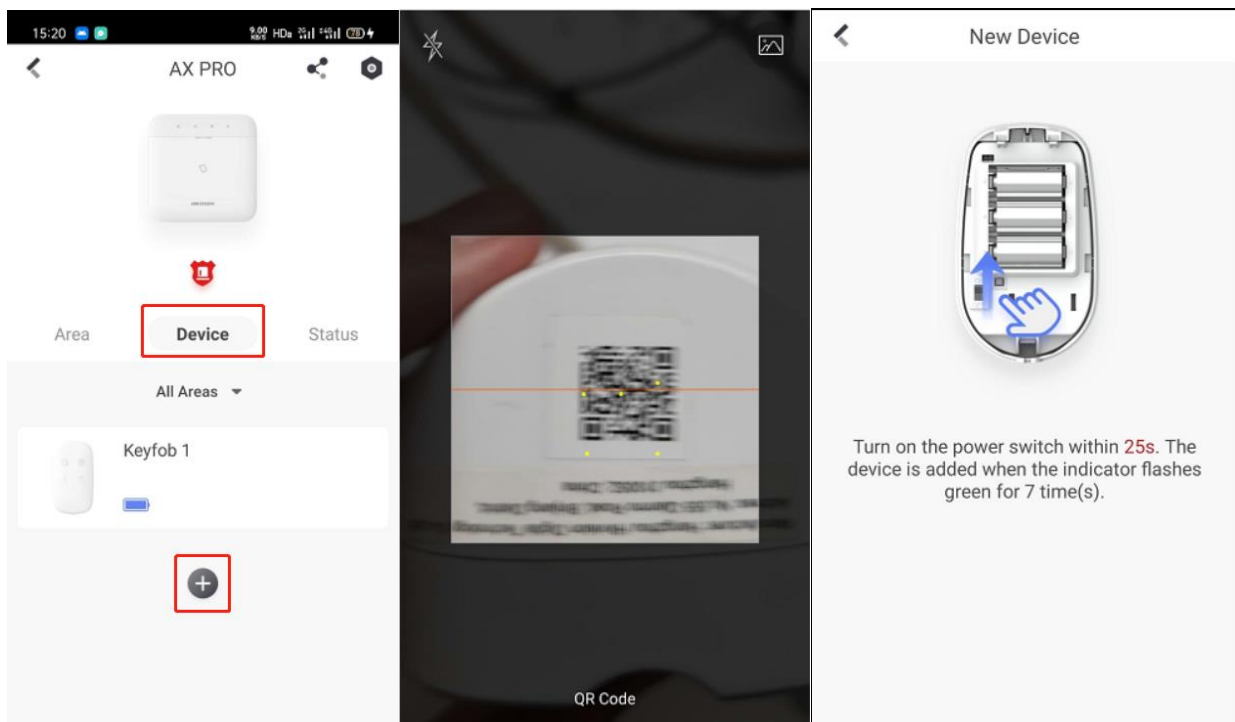
1. DS-PWA Series AX PRO Wireless Security Control Panel
2. Wireless Detector DS-PDPC12P-EG2-WE
3. IE explorer and App Hik-Connect

How to Add Wireless Detector to AX PRO Wireless Control Panel


For AX PRO Panel, You can use Login AX PRO Hik-Connect interface to add detector (Scan the detector QR code) or enable Enrollment Mode , or login IE Browser with Hik-Connect account and password, then enable Enrollment Mode.

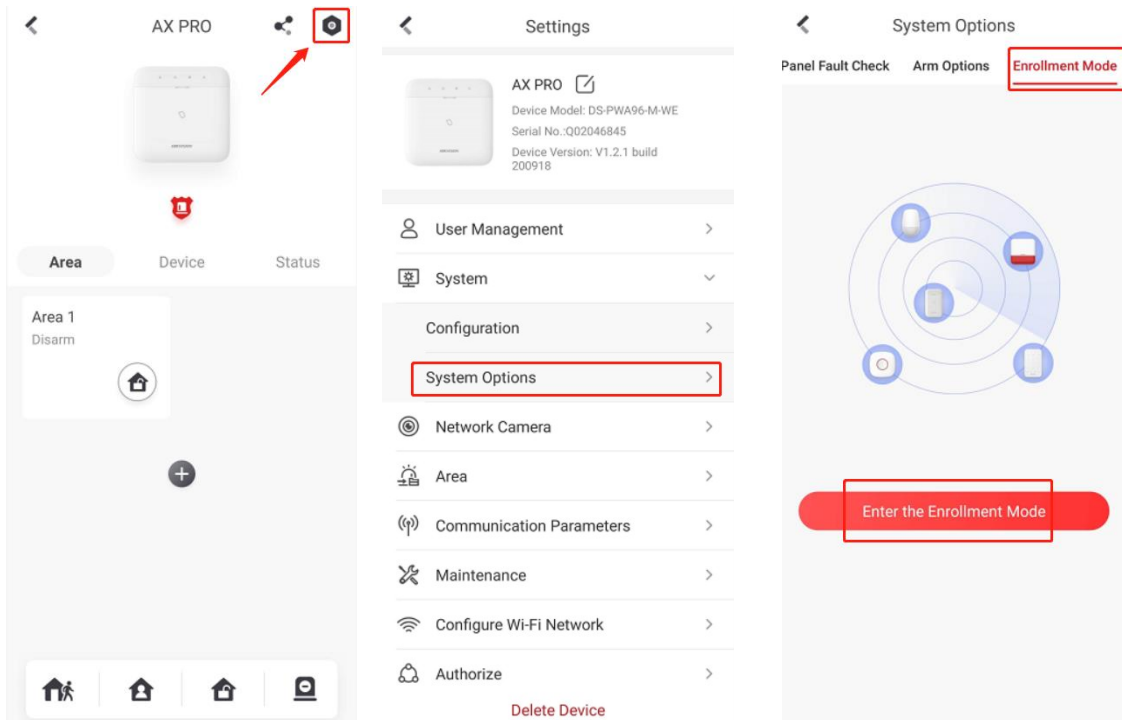
1. Use Hik Connect APP QR Add Function

- 1) Add the AX PRO to Hik-connect at first
- 2) Login AX PRO, select Device and click , scan the QR code and follow the steps.

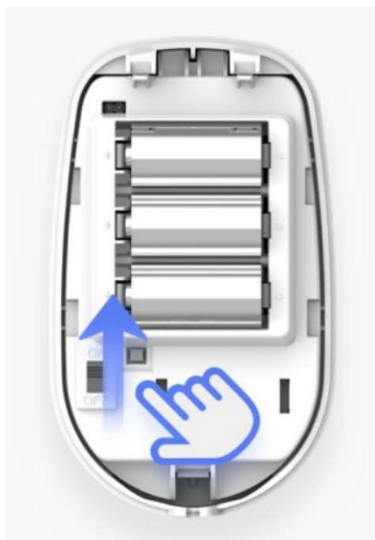


2. Use Hik Connect APP Enrollment Function

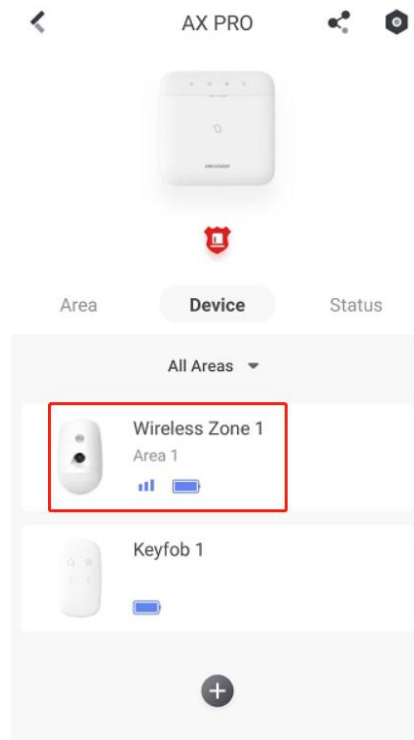
- 1) Add the AX PRO to Hik-connect at first
- 2) Login AX PRO, select Device and click , select System---System Options---Enrollment Mode, and Enable Enrollment Mode.



- 3) Turn on the power switch of Detector.

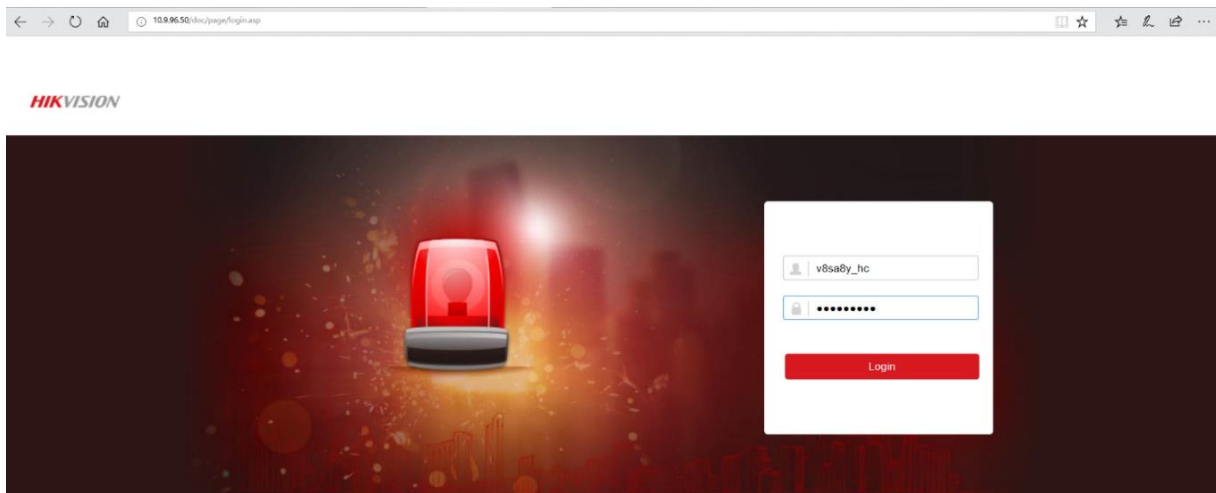


4) Check the status of Detector

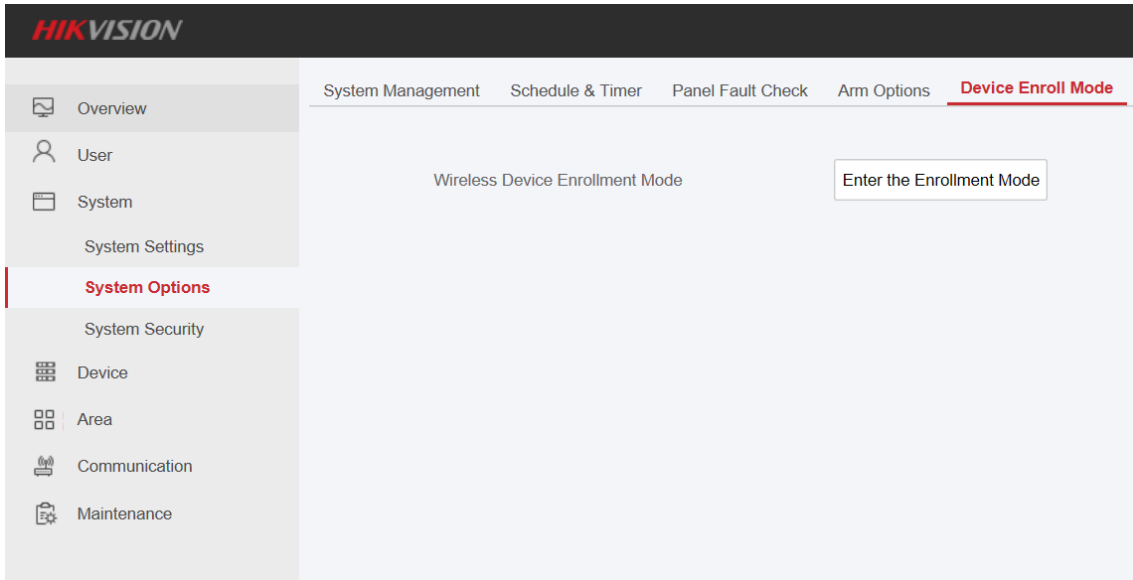


3. Use AX Pro Brower Enrollment Function

- 1) Add the AX PRO to Hik-connect at first
- 2) Use Brower Login Panel IP, account and password is Hik-Connect account and password.



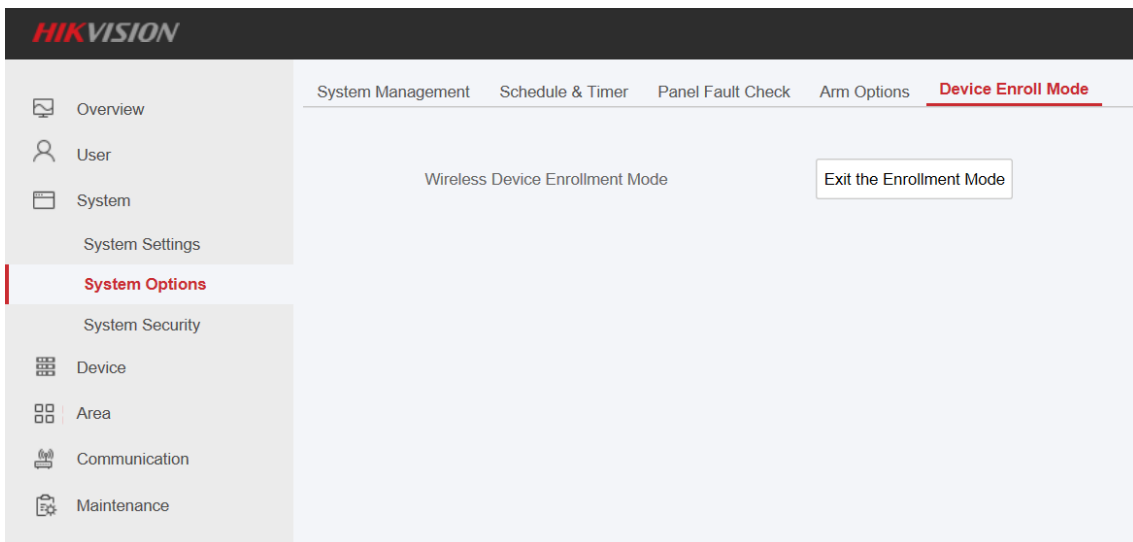
- 3) Select **System—System Options—Device Enroll Mode**, enable **Enter the Enrollment Mode**



4) Turn on the power switch of Detector.



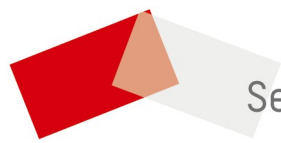
5) After finish adding , click **Exit the Enrollment Mode** to exit.



6) Check the Detector Status: **Maintenance—Device Status—Zone Status**

The screenshot shows the Hikvision AX PRO Status interface. The left sidebar contains navigation options: Overview, User, System, Device, Area, Communication, Maintenance, Device Information, **Device Status**, Log, and Device Maintenance. The main content area has tabs for AX PRO Status, **Zone Status**, Sounder Status, Automation, Repeater Status, Tag Reader Status, and Keypad Status. Below the tabs is a Refresh button. A table displays the Zone Status data:

Zone	Name	Temperature	Battery Status	Signal Strength	Alarm Status	Status
1	Wireless Zone 1	25	100%	(Strong)	Normal	Disarm



See Far, Go Further

Security
WHOLESALE