



How to Add Tag in AX PRO Wireless Control Panel

Title:	How to Add Tag in AX PRO Wireless Control Panel	Version:	v1.0	Date:	12/11/2020
Product:	DS-PWA Series AX PRO Wireless Security Control Panel			Page:	1 of 3

Preparation



1. DS-PWA Series AX PRO Wireless Security Control Panel
2. Wireless Tag DS-PT-MF or normal Mifare card
3. IE Browser and Hik-Connect App

How to Configure Add Tag in AX PRO Wireless Control Panel

After adding cards/tags to the wireless AX PRO, you can swipe the card/tag to arm or disarm all the detectors added to specific area(s) of the AX PRO, and silence alarms.

Note: DS-PWA96 Series(support Max 48 Tags) have built-in Tag Reader , DS-PWA64 Series(support Max 32 Tags) need to connect Wireless Tag Reader(DS-PT1-W) to support this function.

1. Add the Tag to AX PRO with Hik-Connect

- 1) Enter the site, tap the AX PRO and then log in to the device.
- 2) Tap  → User Management → Card/Tag to enter the Tag Management page.
- 3) Tap  add a Tag.
- 4) When hearing the voice prompt "Swipe Tag", you should present the Tag on the AX PRO Tag presenting area.
 - When hearing a beep sound, the Tag is recognized.
 - The Tag will be displayed on the Tag page.
- 5) Tap Edit Icon to edit the Tag name
- 6) Slide Enable Tag
- 7) Select a linked user
- 8) Select the Tag type

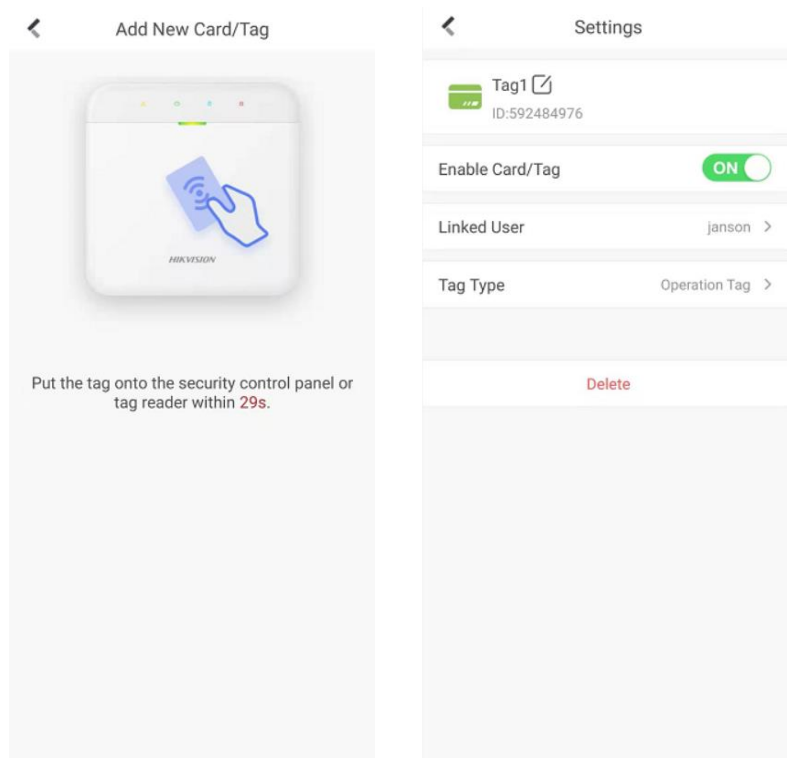
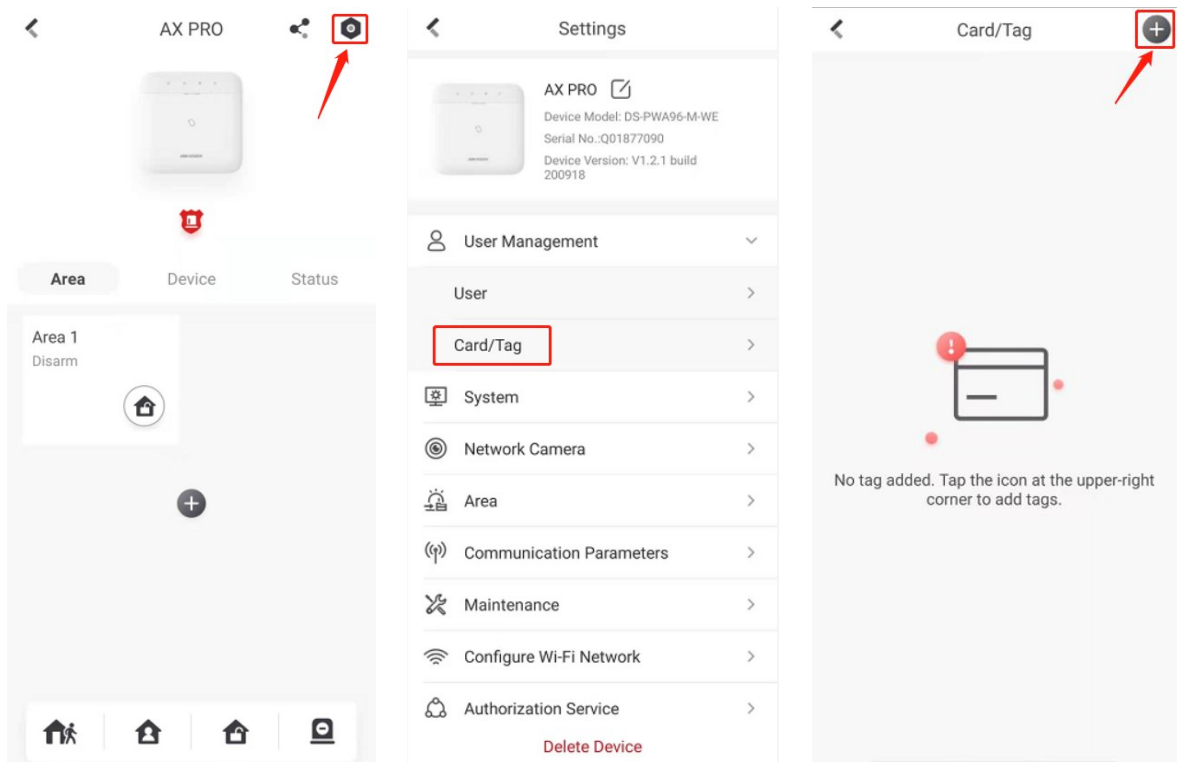
Note:

- If you log in as an installer, skip this step 5). Editing Tag name is only available to administrator.
- The name should contain 1 to 32 characters.
- Different linked users have different Tag permissions.

Tag Type :

Operation Tag : You can swipe the Tag to arm or disarm.

Patrol Tag : When you swipe the Tag, the system will upload a record (Not arm/disarm).



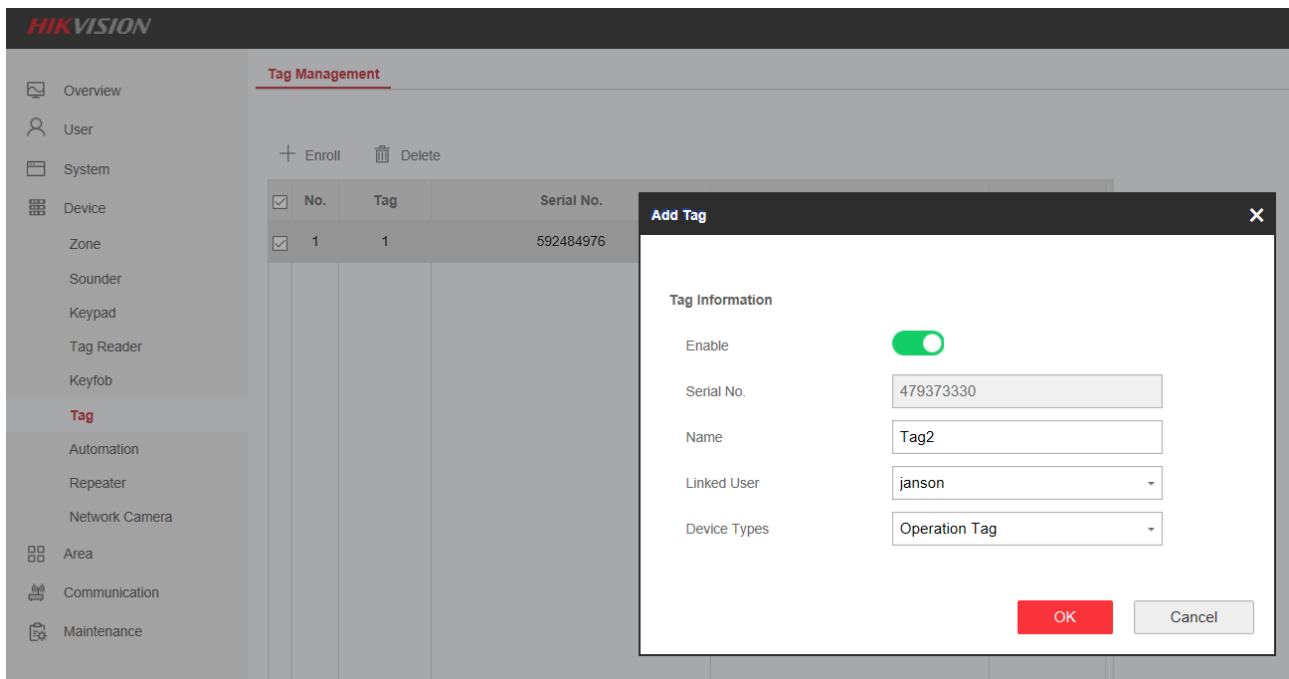
2. Add the Tag to AX PRO with IE Browser

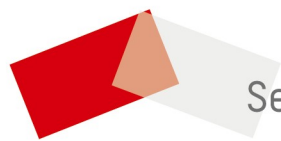
- 1) Enter the site, tap the AX PRO and then log in to the device.
- 2) Click Device → Tag to enter the Tag Management page.
- 3) Click +Enroll to add a Tag.
- 4) When hearing the voice prompt "Swipe Tag", you should present the Tag on the AX PRO Tag presenting area.
 - When hearing a beep sound, the Tag is recognized.
 - The Tag will be displayed on the Tag page.
- 5) Click Edit Icon to edit the Tag name
- 6) Slide Enable Tag
- 7) Select a linked user
- 8) Select the Tag type

Device Type :

Operation Tag : You can swipe the Tag to arm or disarm.

Patrol Tag : When you swipe the Tag, the system will upload a record (Not arm/disarm).





See Far, Go Further

Security
≡≡≡ **WHOLESALE**