

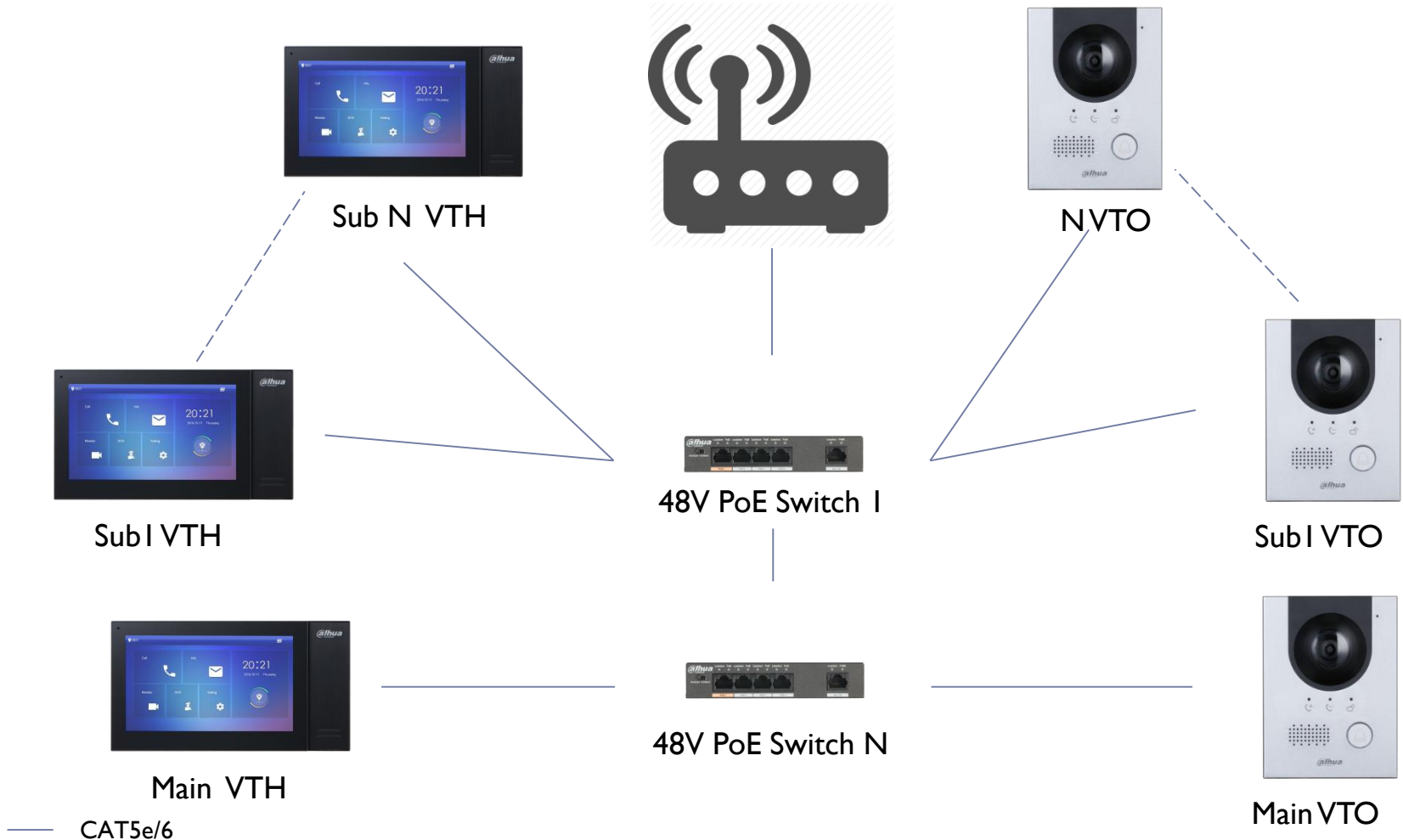


# Dahua Villa Intercom Guide

## Configure N VTH x N VTO

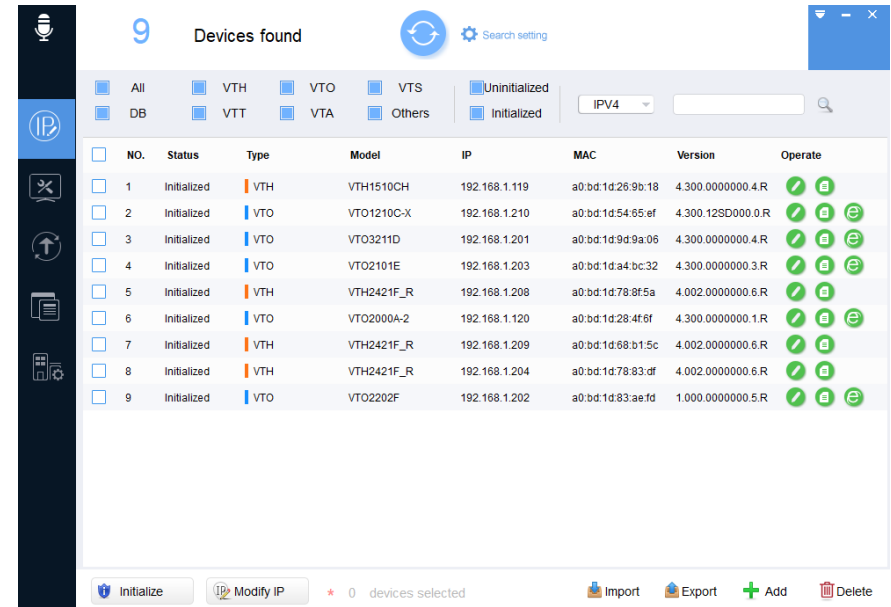
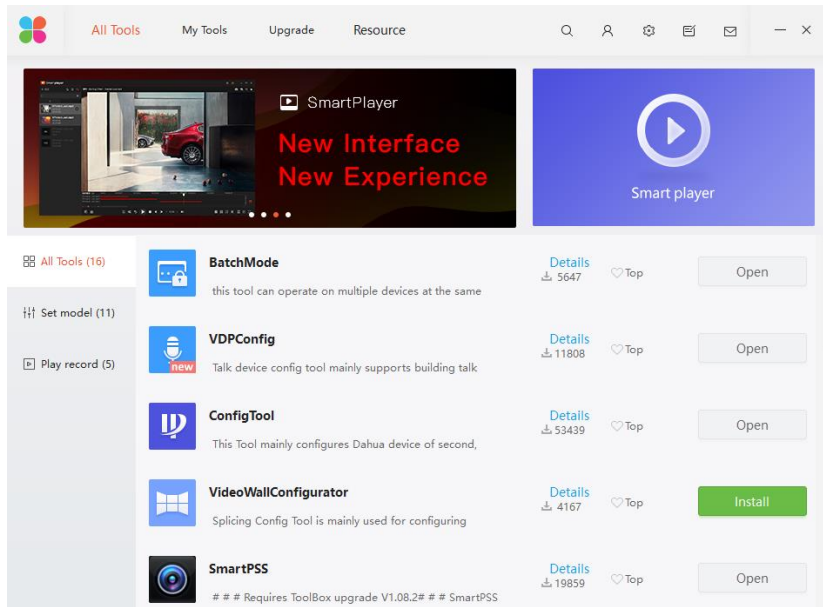


# Wiring Diagram



# 1. Download VDPConfig

- ▶ Download Toolbox and login.
- ▶ Download VDPConfig and open it.



# 2. Initialise VTO and VTHs separately

## ► Initialise VTH

13 Devices found

NO.	Status	Type	Model	IP	MAC	Version	Operate
1	Initialzed	VTO	VTO1210C-X	192.168.1.210	a0:bd:16:54:85:ef	4.300.128D0000.0.R	⊕ ⊖
2	Initialzed	VTO	VTO2202F	192.168.1.202	a0:bd:16:83:ae:fd	1.000.00000000.5.R	⊕ ⊖
3	Initialzed	VTH	VTH2421F_R	192.168.1.209	a0:bd:16:68:b0:d8	4.002.00000000.6.R	⊕ ⊖
4	Initialzed	VTH	VTH2421F_R	192.168.1.204	a0:bd:16:78:83:df	4.002.00000000.6.R	⊕ ⊖
5	Initialzed	VTH	VTH1510CH	192.168.1.119	a0:bd:16:26:9e:18	4.300.00000000.4.R	⊕ ⊖
6	Initialzed	VTO	VTO3211D	192.168.1.201	a0:bd:16:94:9a:06	4.300.00000000.4.R	⊕ ⊖
7	Initialzed	VTH	VTH2421F_R	192.168.1.208	a0:bd:16:78:8f:5a	4.002.00000000.6.R	⊕ ⊖
8	Initialzed	VTO	VTO2000A-2	192.168.1.120	a0:bd:16:28:4f:9f	4.300.00000000.1.R	⊕ ⊖
9	Initialzed	VTO	VTO2101E	192.168.1.203	a0:bd:16:a4:bc:32	4.300.00000000.3.R	⊕ ⊖
10	Uninitialzed	VTH	VTH2421F_R	192.168.1.129	a0:bd:16:68:b0:d8	4.002.00000000.6.R	⊕ ⊖
11	Uninitialzed	VTH	VTH2421F_R	192.168.1.130	a0:bd:16:68:b0:ff	4.002.00000000.6.R	⊕ ⊖
12	Uninitialzed	VTO	VTO2202F	192.168.1.131	a0:bd:16:83:ae:af	1.000.00000000.5.R	⊕ ⊖
13	Uninitialzed	VTO	VTO2101E	192.168.1.132	a0:bd:16:a4:bc:2e	4.300.00000000.3.R	⊕ ⊖

Buttons: Initialize, Modify IP, Import, Export, Add, Delete

Tick all VTHs > Click Initialize

Device initialization

2 device(s) have not been initialized

NO.	Type	Model	IP	MAC	Version
1	VTH	VTH2421F_R	192.168.1.129	a0:bd:16:68:b0:d8	4.002.00000000.6.R
2	VTH	VTH2421F_R	192.168.1.130	a0:bd:16:68:b0:ff	4.002.00000000.6.R

\*The list only shows device in the LAN, you cannot initialize crossing LAN.

Initialize

Click Initialize

Device initialization

2 device(s) have not been initialized

User name: admin

New Password: [6 dots]

Weak Medium Strong

Confirm Password: [6 dots]

Please input 6 bytes from numbers.

Email Address: dahua@dahua.com (for password reset)

\*After you have set new password, please set password again in Search setting.

Initialize

Type the Password (6 digits Required, only Numbers) Email Address not necessary for VTO Click Initialize

# 2. Initialise VTH and VTHs separately

## ► Initialise VTO

13 Devices found

Search setting

IPV4

NO.	Status	Type	Model	IP	MAC	Version	Operate
1	Initialized	VTO	VTO1210C-X	192.168.1.210	a0 bd 1d 54 85 ef	4.300.12SD0000.0.R	
2	Initialized	VTO	VTO2202F	192.168.1.202	a0 bd 1d 83 ae f5	1.000.00000000.5.R	
3	Initialized	VTH	VTH2421F_R	192.168.1.209	a0 bd 1d 58 b1 5c	4.002.00000000.6.R	
4	Initialized	VTH	VTH2421F_R	192.168.1.204	a0 bd 1d 78 83 df	4.002.00000000.6.R	
5	Initialized	VTH	VTH1510CH	192.168.1.119	a0 bd 1d 26 9b 18	4.300.00000000.4.R	
6	Initialized	VTO	VTO321HD	192.168.1.201	a0 bd 1d 9d 9a 06	4.300.00000000.4.R	
7	Initialized	VTH	VTH2421F_R	192.168.1.208	a0 bd 1d 78 8f 5a	4.002.00000000.6.R	
8	Initialized	VTO	VTO2000A-2	192.168.1.120	a0 bd 1d 28 4f 6f	4.300.00000000.1.R	
9	Initialized	VTO	VTO2101E	192.168.1.203	a0 bd 1d a4 bc 32	4.300.00000000.3.R	
10	Uninitialized	VTH	VTH2421F_R	192.168.1.129	a0 bd 1d 68 b0 08	4.002.00000000.6.R	
11	Uninitialized	VTH	VTH2421F_R	192.168.1.130	a0 bd 1d 68 b0 0f	4.002.00000000.6.R	
12	Uninitialized	VTO	VTO2202F	192.168.1.131	a0 bd 1d 83 ae a8	1.000.00000000.5.R	
13	Uninitialized	VTO	VTO2101E	192.168.1.132	a0 bd 1d a4 bc 2e	4.300.00000000.3.R	

Initialize Modify IP 2 device(s) selected Import Export Add Delete

Tick all VTOs > Click Initialize

Device initialization

2 device(s) have not been initialized

NO.	Type	Model	IP	MAC	Version
1	VTO	VTO2202F	192.168.1.131	a0 bd 1d 83 ae a8	1.000.00000000.5.R
2	VTO	VTO2101E	192.168.1.132	a0 bd 1d a4 bc 2e	4.300.00000000.3.R

\*The list only shows device in the LAN, you cannot initialize crossing LAN.

Initialize

Click Initialize

Device initialization

2 device(s) have not been initialized

User name: admin

New Password: [Masked] Weak Medium Strong

Confirm Password: [Masked]

The password shall be 8-32 digits. It is a combination of number(s), letter(s), symbol(s) with at least two kinds of them.

Email Address (for password reset)

\*After you have set new password, please set password again in Search setting.

Initialize

Type the Password (Numbers and Letters, min 8 characters) Email Address not necessary for VTO Click Initialize

# 3. Find SN of Device

9 Devices found

All  VTH  VTO  VTS  Uninitialized  
 DB  VTT  VTA  Others  Initialized

NO.	Status	Type	Model	IP	MAC	Version	Operate
1	Initialized	VTH	VTH1510CH	192.168.1.119	a0:bd:1d:26:9b:18	4.300.0000000.4.R	✓ [i] [e]
2	Initialized	VTO	VTO1210C-X	192.168.1.210	a0:bd:1d:54:65:ef	4.300.12SD000.0.R	✓ [i] [e]
3	Initialized	VTO	VTO3211D	192.168.1.201	a0:bd:1d:9d:9a:06	4.300.0000000.4.R	✓ [i] [e]
4	Initialized	VTO	VTO2101E	192.168.1.203	a0:bd:1d:a4:bc:32	4.300.0000000.3.R	✓ [i] [e]
5	Initialized	VTH	VTH2421F_R	192.168.1.208	a0:bd:1d:78:8f:5a	4.002.0000000.6.R	✓ [i] [e]
6	Initialized	VTO	VTO2000A-2	192.168.1.120	a0:bd:1d:28:4f:6f	4.300.0000000.1.R	✓ [i] [e]
7	Initialized	VTH	VTH2421F_R	192.168.1.209	a0:bd:1d:68:b1:5c	4.002.0000000.6.R	✓ [i] [e]
8	Initialized	VTH	VTH2421F_R	192.168.1.204	a0:bd:1d:78:83:df	4.002.0000000.6.R	✓ [i] [e]
9	Initialized	VTO	VTO2202F	192.168.1.202	a0:bd:1d:83:ae:fd	1.000.0000000.5.R	✓ [i] [e]

\* 0 devices selected

Click the [i] icon

Details

Type: VTH

Model: VTH2421F\_R

Port: 37777

MAC: a0:bd:1d:78:8f:5a

Subnet: 255.255.255.0

Gateway: 192.168.1.1

Serial No.: 5H: 736

Version: V4.002.000000.6.R

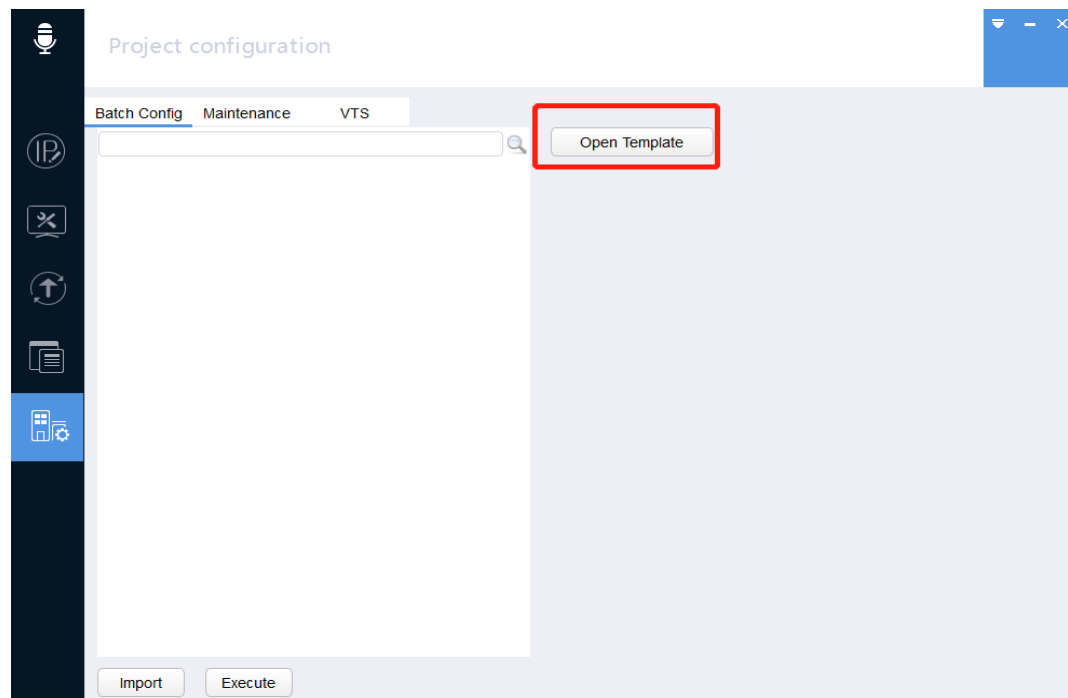
Build Date:

Note down SN for the template

## 4. Template Excel File

---

- ▶ Open Project configuration in VDPCConfig
  - ▶ Click Open Template
  - ▶ Save as the template in a different location
  - ▶ Keep the template for future maintenance



# 4. Template Excel File

## 1 VTH x 1 VTO Template Explanation

- Fill up the form as the Steps shown below, and save the Template Excel File.

**Step 2, Network Info:**

- ✓ IP address has to be unique and valid.
- ✓ Gateway will be same for all device.
- ✓ Gateway is Router IP address.

**Step 4, Physical Info:**

- ✓ VTO/VTH No.: Room No. for VTO and VTH. VTH has the extension No. 0.
- ✓ Center No: leave it as it is.
- ✓ Main VTO: for monitor, choose NA. For door station, choose Y.

*Device Type		Device Name	*Device ID	*Network Info				*Login Info		*Physical Info				*SIP Service Info		
VTO	VTH	Device Name	SN	IP Address	Net Mask	Gateway	Port	User	Project PWD	VTO/VTH No.	Extention No.	Center No.	Main VTO	Server IP	SIP Server Pwd	Server Type
	VTH		5H026AFPAZ95	192.168.1.130	255.255.0.0	192.168.1.1	37777	admin	123456	9901	0	/	NA	192.168.1.131	admin123	/
VTO			5J07A2CPAZ1	192.168.1.131	255.255.0.0	192.168.1.1	37777	admin	admin123	8001	/	888888	Y	192.168.1.131	admin123	VTO

**Step 1, SN:**  
SN from VDPCong on Slide 4

**Step 3, Login Info:**  
Username and password for VTO and VTH when initialization

**Step 5, SIP Service Info:**

- ✓ Server IP: VTO IP address
- ✓ SIP Server Pwd: VTO Pwd
- ✓ Server Type: For monitor, choose '/'. For door station, choose VTO

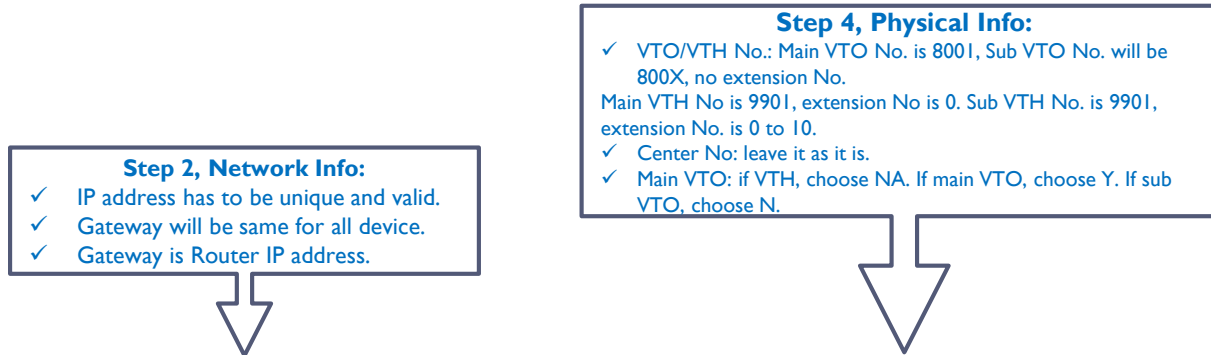




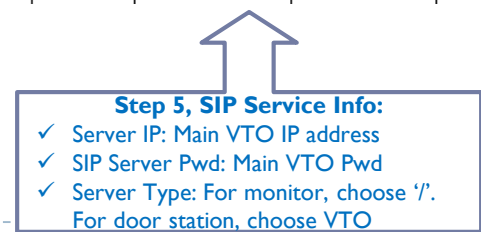
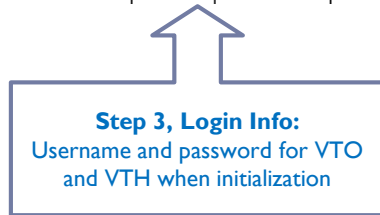
# 4. Template Excel File

## 2 VTH x 2 VTO Template Explanation

- Valid for 2 or more VTO/VTH system
- Fill up the form as the Steps shown below, and save the Template Excel File.

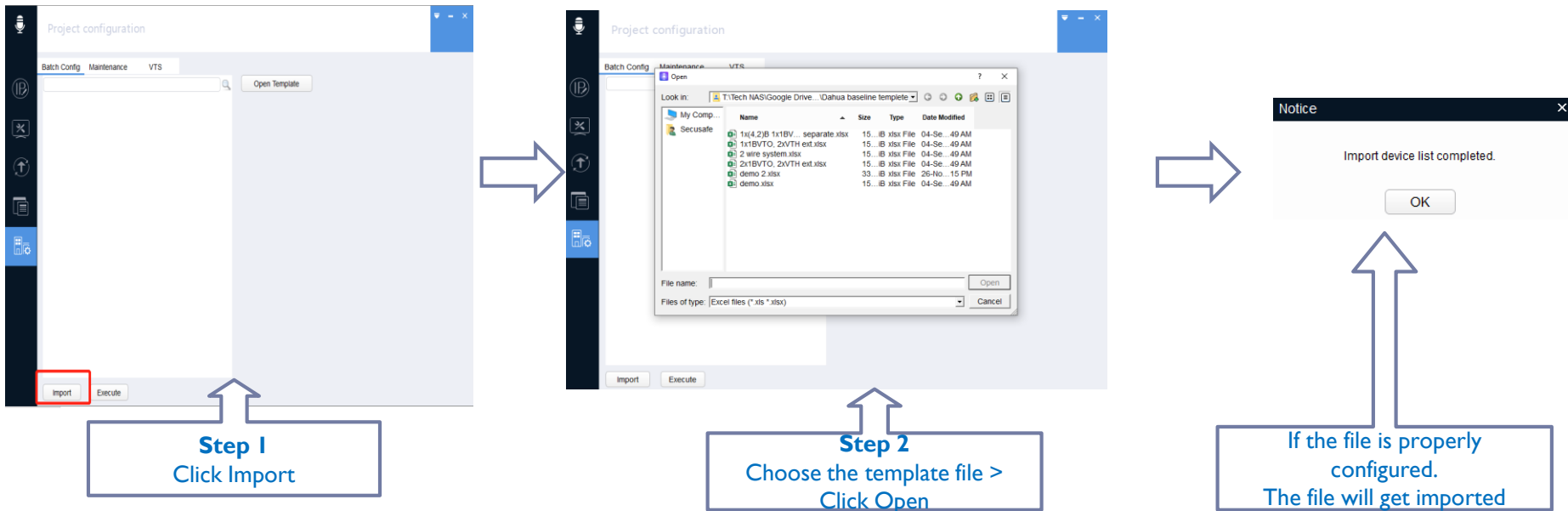


*Device Type		*Device ID	*Network Info			*Login Info		*Physical Info				*SIP Service Info		
VTO	VTH	SN	IP Address	Net Mask	Gateway	User	Project PWD	VTO/VTH No.	Extention No.	Center No	Main VTO	Server IP	SIP Server Pwd	Server Type
	VTH	5H026AFPAZ3B229	192.168.1.129	255.255.0.0	192.168.1.1	admin	123456	9901	0	/	NA	192.168.1.131	digi12345	/
	VTH	5H026AFPAZ95736	192.168.1.130	255.255.0.0	192.168.1.1	admin	123456	9901	1	/	NA	192.168.1.131	digi12345	/
VTO		5H026AEPACZC79B5	192.168.1.131	255.255.0.0	192.168.1.1	admin	digi12345	8001	/	8888888	Y	192.168.1.131	digi12345	VTO
VTO		5J07A2CPAZ2DFDF	192.168.1.132	255.255.0.0	192.168.1.1	admin	digi12345	8002	/	8888888	N	192.168.1.131	digi12345	VTO



# 5. Import Template

► Go to VDPCConfig -> Project Configuration



# 6. Execute Template

**Step 1:**  
Expand the list  
Tick the first line to choose all device

**Step 2:**  
Click Execute

**Step 3:**  
- If successful tick will come up  
- If unsuccessful there will be ! Mark

- All the system will reboot after Step 3  
- Wait for 5 minutes after system reboots  
- Test the calls from all VTO and VTH

The screenshot shows a web interface with a sidebar on the left containing icons for IP, a search icon, a refresh icon, a list icon, and a settings icon. The main area has tabs for 'Batch Config', 'Maintenance', and 'VTS'. Below the tabs is a search bar. The main content is a tree view with the following structure:

- N VTH N VTO Villa
  - Building
    - Unit
      - VTH
        - 192.168.1.129 ✓
        - 192.168.1.130 ✓
      - VTO
        - 192.168.1.131 ✓
        - 192.168.1.132 ✓

At the bottom of the interface are 'Import' and 'Execute' buttons. An arrow points from the 'Execute' button to a box labeled 'Step 2: Click Execute'. Another arrow points from the 'Execute' button to a box labeled 'Step 3' which contains instructions about success markers. A third arrow points from the first line of the tree view to a box labeled 'Step 1' which instructs to expand the list and tick the first line.



# Technical Support

---

- You could download Pre-configured templates made by Secusafe Pty Ltd.



1 VTH 1 VTO Villa



N VTH N VTO Villa

- Or contact [techsupport@secusafe.com.au](mailto:techsupport@secusafe.com.au) for the template.



# SECUSAFE

YOUR BEST SURVEILLANCE PARTNER

