

Wireless Displacement Detector

Product Information

COPYRIGHT ©2018 Hangzhou Hikvision Digital Technology Co., Ltd.
ALL RIGHTS RESERVED.
Any and all information, including, among others, wordings, pictures, graphs are the properties of Hangzhou Hikvision Digital Technology Co., Ltd. or its subsidiaries (hereinafter referred to be "Hikvision"). This user manual (hereinafter referred to be "the Manual") cannot be reproduced, changed, translated, or distributed, partially or wholly, by any means, without the prior written permission of Hikvision. Unless otherwise stipulated, Hikvision does not make any warranties, guarantees or representations, express or implied, regarding to the Manual.

About this Manual
This Manual is applicable to Control Panel
The Manual includes instructions for using and managing the product. Pictures, charts, images and all other information hereinafter are for description and explanation only. The information contained in the Manual is subject to change, without notice, due to firmware updates or other reasons. Please find the latest version in the company website (<http://overseas.hikvision.com/en/>). Please use this user manual under the guidance of professionals.

HIKVISION Trademarks Acknowledgement and other Hikvision's trademarks and logos are the properties of Hikvision in various jurisdictions. Other trademarks and logos mentioned below are the properties of their respective owners.

Legal Disclaimer
TO THE MAXIMUM EXTENT PERMITTED BY APPLICABLE LAW, THE PRODUCT DESCRIBED, WITH ITS HARDWARE, SOFTWARE AND FIRMWARE, IS PROVIDED "AS IS", WITH ALL FAULTS AND ERRORS, AND HIKVISION MAKES NO WARRANTIES, EXPRESS OR IMPLIED, INCLUDING WITHOUT LIMITATION, MERCHANTABILITY, SATISFACTORY QUALITY, FITNESS FOR A PARTICULAR PURPOSE, AND NON-INFRINGEMENT OF THIRD PARTY. IN NO EVENT WILL HIKVISION, ITS DIRECTORS, OFFICERS, EMPLOYEES, OR AGENTS BE LIABLE TO YOU FOR ANY SPECIAL, CONSEQUENTIAL, INCIDENTAL, OR INDIRECT DAMAGES, INCLUDING, AMONG OTHERS, DAMAGES FOR LOSS OF BUSINESS PROFITS, BUSINESS INTERRUPTION, OR LOSS OF DATA OR

DOCUMENTATION, IN CONNECTION WITH THE USE OF THIS PRODUCT, EVEN IF HIKVISION HAS BEEN ADVISED OF THE POSSIBILITY OF SUCH DAMAGES. REGARDING TO THE PRODUCT WITH INTERNET ACCESS, THE USE OF PRODUCT SHALL BE WHOLLY AT YOUR OWN RISKS. HIKVISION SHALL NOT TAKE ANY RESPONSIBILITIES FOR ABNORMAL OPERATION, PRIVACY LEAKAGE OR OTHER DAMAGES RESULTING FROM CYBER ATTACK, HACKER ATTACK, VIRUS INSPECTION, OR OTHER INTERNET SECURITY RISKS; HOWEVER, HIKVISION WILL PROVIDE TIMELY TECHNICAL SUPPORT IF REQUIRED. SURVEILLANCE LAWS VARY BY JURISDICTION. PLEASE CHECK ALL RELEVANT LAWS IN YOUR JURISDICTION BEFORE USING THIS PRODUCT IN ORDER TO ENSURE THAT YOUR USE CONFORMS THE APPLICABLE LAW. HIKVISION SHALL NOT BE LIABLE IN THE EVENT THAT THIS PRODUCT IS USED WITH ILLEGITIMATE PURPOSES. IN THE EVENT OF ANY CONFLICTS BETWEEN THIS MANUAL AND THE APPLICABLE LAW, THE LATER PREVAILS.

English

Diagram Reference

1 Appearance

1 Indicator

- Alarm Detection:
 - Alarm Occurs - Red light flashes 2 times.
 - Delayed Alarm Triggered - Red light flashes once.

- Display Signal Strength:
 - Under the signal strength checking mode:
 - Green - Strong Signal
 - Red - Weak Signal

2 Reset Button

- After the device being powered off, hold the reset button. Power the device on.
 - The red LED flashes 3 times when the formatting is completed.

3 DIP Switch

- Indicator On/Off
- Sensitivity Settings
- Tamper
- If the detector is disassembled, an alarm will be triggered.

2 DIP Switch

- Set the DIP before power on for the first time use.
- Loosen the set screws and disassemble the device.
- Remove the front panel.

Note: Do not disassemble the device with sharps.

a Indicator On/Off

- Set the bit 1 for turning on/off the indicator.

b Sensitivity

- Set the bit 2 and bit 3 for sensitivity.
- Bit 2: Alarm Time Settings
- Bit 3: Delayed Alarm Settings.
- If the detector keeps static for 3s after a movement is detected, the alarm will not be triggered. Otherwise the alarm will be triggered.

- 1) Alarm Triggered after Moving for 1s to 2s (Without Delay for 3s)
- 2) Alarm Triggered after Moving for 3s to 4s (Without Delay for 3s)
- 3) Alarm Triggered after Moving for 1s to 2s (With Delay for 3s)
- 4) Alarm Triggered after Moving for 3s to 4s (With Delay for 3s)

3 Detector Power On

- Remove the insulating strip to power on the detector.
- The detector will enter the test mode after powering on. The indicator will flash in red and green alternatively. Do not move the detector during the test. After the test is finished, the indicator will be turned off.
- Indicator Color: R=Red, G=Green

4 Detector Registration

- Register the Detector Locally
- Power on the security control panel. Press the function button once and shake the detector. And you can add the detector according to the voice prompt. The green LED of the detector will flash 8 times after being successfully added.

Note: The distance between the security control panel and the detector should be less than 50 cm.

b Register the Detector via APP

- Log in to the APP Store and input "Hik-Connect" to search the mobile client.
- Download and install Hik-Connect to your phone.
- After installing, tap to run the client.
- Power on the security control panel.
- Log in the Hik-Connect and tap the icon "+" at the upper-right corner of the Hik-Connect page to add the security control panel. You can scan the QR code on the device rear panel or on the package box, or input the device serial No. manually to add the device when the device is in the registration mode.
- After adding the security control panel, tap the arming status icon on the right of the security control panel's name to enter the Partition page.
- Tap the "+" icon on the Partition page to add the peripherals.

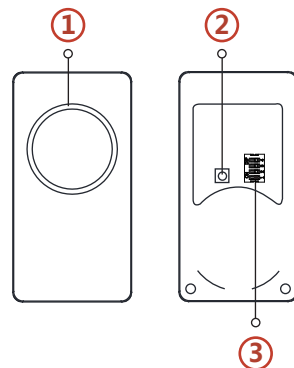
5 Detector Installation

- Check Signal Strength
 - Enter the signal checking mode by operating on the control panel.
 - Detector indicator turns green: Strong Signal.
 - Detector indicator turns red: Weak Signal.
 - Install the Detector
 - Paste the sponge tape on the rear side of the detector.
 - Paste the detector on the required place.
- Note: To make the TAMPER work properly, the thickness of the sponge tape should be no more than 1mm.

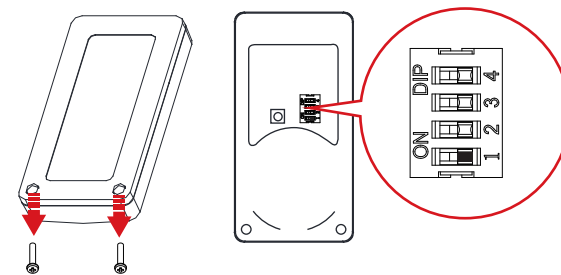
Specification

Wireless Displacement Detector	
RF Frequency	433MHz
RF Modulation	FSK
Transmission Speed	10.0kbps
Battery	CR2450
Internal Button	1
Tamper	1 Internal tamper
Indicator	1 (Dual-LED)
DIP Switch	1 for indicator control 2 for sensitivity settings
Material	Nonmetal; PC+ABS
Installation Environment	Indoor/Outdoor
Temperature	-10 °C to 55 °C
Humidity	10% to 90%
Protection Level	IP66
Dimension (W*H*D)	31mm*60mm*10mm
Weight	22.0g
Installation Type	Tap

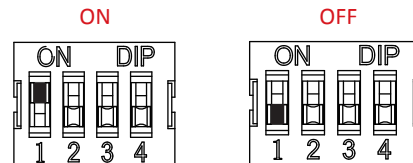
1



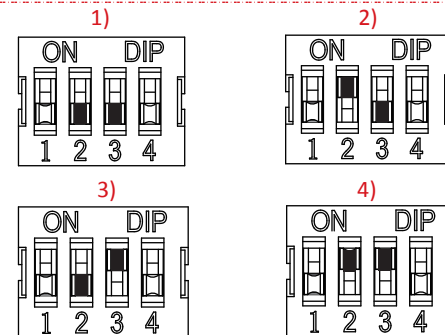
2



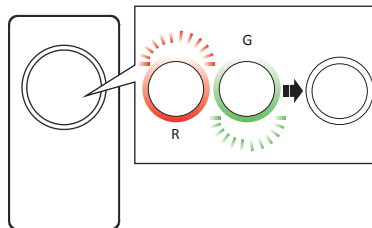
a



b



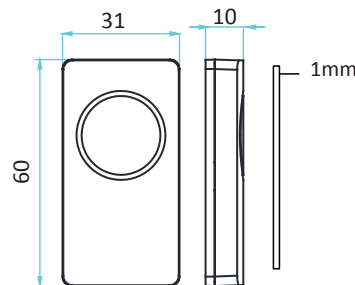
3



4



5



This product and - if applicable - the supplied accessories too are marked with "CE" and comply therefore with the applicable harmonized European standards listed under the RE Directive 2014/53/EU, the RoHS Directive 2011/65/EU.

